

Content Central Evaluation Installation Guide

Document Management Software



Table of Contents

Preface	iii
1. Foreword	iii
2. System Requirements	iii
2.1. Server(s)	iii
2.1.1. Hardware	iii
2.1.2. Software	iii
2.2. Client Workstations	iv
2.2.1. Hardware	iv
2.2.2. Software	iv
2.2.3. Optional Software	iv
I. Installation Guide	1
1. Software Installation	2
1. Introduction	2
2. Installing Content Central	2
3. Evaluating Content Central	4

Preface

1. Foreword

When we at Ademero set out to design a document management system, we wanted to provide the framework and feature set that *you* the user have requested over the years. We believe Content Central has accomplished just that. We respect your thoughts and opinions and consider all feedback we receive from our customers. Always feel free to drop us a line via phone, Web, or e-mail. Customer satisfaction is our primary goal.

We've attempted to write this documentation in a way that provides concepts and definitions first and foremost before instructions. If for any reason any part of this document is unclear or the product does not perform as indicated or expected, please contact our support center below for a quick response and resolution to the issue you're experiencing. We pride ourselves on customer service; that's why we offer our support to you 24 hours-a-day, 7 days-a-week on any day of the year.

Ademero Support Channels

Phone	(863) 937-0272
Toll-Free	(888) 276-2914
E-mail	support@ademero.com [mailto:support@ademero.com]
Web Site	http://www.ademero.com/

2. System Requirements

2.1. Server(s)

Content Central requires at least one PC-based server platform for product installation.

2.1.1. Hardware

Minimum Requirements

- 2GHz Dual-Core Processor
- 2GB RAM
- 80GB Redundant Storage Space

Recommended Hardware

- Quad-Core Intel® Xeon® Processors
- 4GB RAM
- 250GB Redundant Storage Space

2.1.2. Software

Content Central (server software) runs only on Microsoft® Windows® operating systems.

- Microsoft® Windows® XP Professional or higher (Windows Server 2008 or higher recommended)
- Microsoft® Internet Information Services (IIS) 5.0 or higher (7.0 or higher recommended)
- Microsoft® .NET Framework 3.5 or higher (included in the Content Central installation package)
- Microsoft® SQL Server 2005 or higher (SQL Server 2008 Express Edition included in the Content Central installation package)

2.2. Client Workstations

Content Central does not require software to be installed on client workstations. The client should contain an operating system and a Web browser. An optional PDF viewer (such as Adobe® Reader®) can be used to view captured paper documents.

2.2.1. Hardware

Minimum Requirements

- 2GHz Processor
- 1GB RAM

Recommended Hardware

- 2.5GHz Dual-Core Processor
- 2GB RAM

2.2.2. Software

- Microsoft® Windows® 2000 or higher (Microsoft® Windows® XP Pro or higher recommended); or
- Mac® OS X or higher
- Microsoft® Internet Explorer 7.0 or higher; or
- Mozilla Firefox® 3.0 or higher
- Sun Microsystems® Java™ runtime environment (JRE) 6.0 or higher

2.2.3. Optional Software

- Browser-based PDF viewer
- TWAIN driver for any scanner you wish to use with the DirectScan™ applet

Part I. Installation Guide



Chapter 1. Software Installation

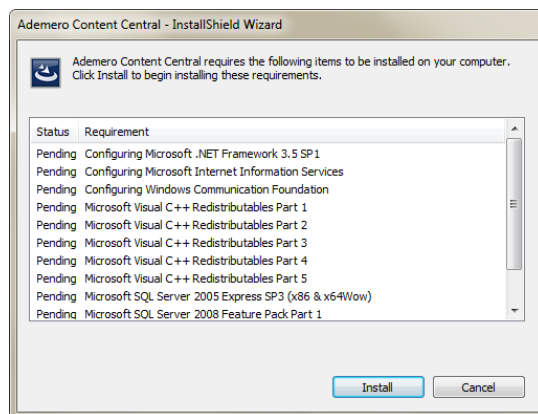
1. Introduction

You will now load the Content Central software on your server(s). When you've completed the steps in this chapter, you will have installed all necessary software components of Content Central and will be ready to either evaluate the software or begin configuring for production.

2. Installing Content Central

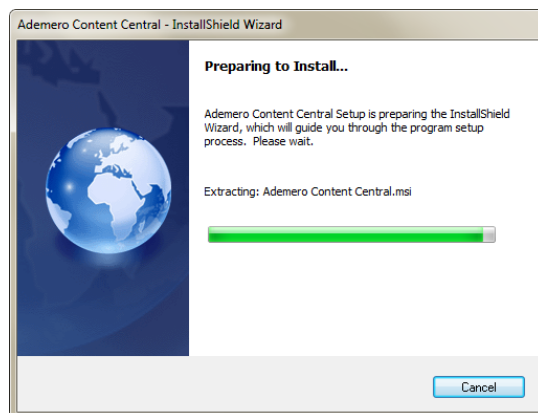
Launch the installation program, `ContentCentral_Setup.exe`. Content Central requires several supporting packages to be installed prior to installation. Select the **Install** button to proceed. Be patient as the installer will load several prerequisites, including a new instance of Microsoft® SQL Server Express Edition.

You may be provided with an option to install additional packages. Choose the appropriate selections for your organization.



Installation Prerequisites

After the prerequisites have finished installing, the InstallShield Wizard will appear and prepare for installation.



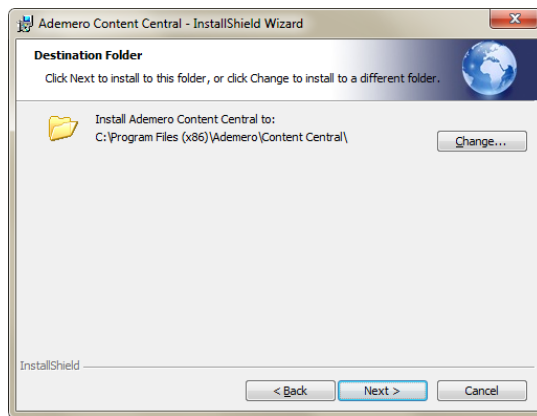
InstallShield Wizard Preparation

To begin the installation of Content Central, select the **Next** button. You will be presented with the Ademero End-User License Agreement. Select the **Next** button if you wish to proceed.



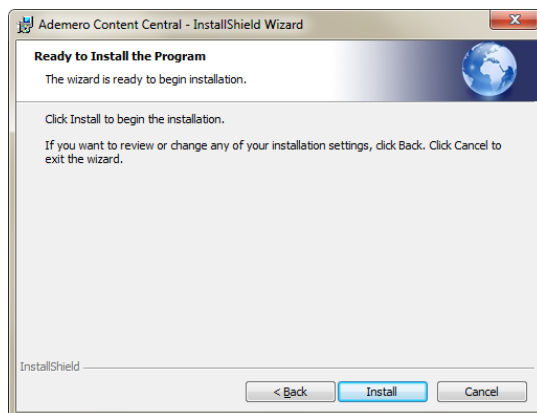
InstallShield Wizard Welcome Screen

You may now choose your **Destination Folder** for the Content Central software. After choosing the appropriate location, select the **Next** button to continue.



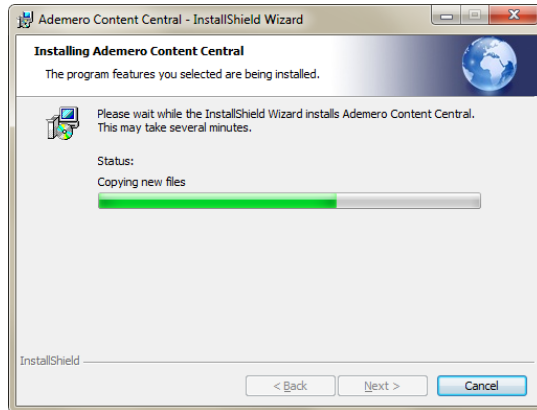
Content Central Destination Folder

You now have the opportunity to go back and make changes if necessary, otherwise select **Install**.



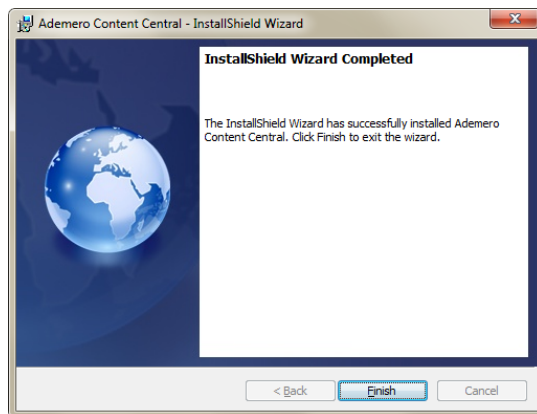
InstallShield Wizard - Begin Installation

Be patient as the application is installed.



Content Central Installation Progress

When the installation is complete you will be presented with a **Finish** button to exit the InstallShield Wizard. You can optionally choose to **View Release Notes**, which will be opened when the wizard closes. Content Central is now installed.



Content Central Installation Progress

3. Evaluating Content Central

If you've installed Content Central for evaluation purposes, you may login to the Web site immediately and begin using the product with the installed demonstration catalogs and documents.

Launch the Web site by selecting the Content Central shortcut on your desktop. In most cases, the URL is <http://localhost/ContentCentral/Login.aspx>.

Login with the **Username** *demo* and **Password** *demo*.

You can proceed directly to the [User Guide](#).